

## Features

- ◇ Suitable for very rough and uneven surface and all other applications in which traditional suction cups can't be used.
- ◇ NF(black) is suitable for handling workpiece with rough surface and for outdoor use. Good weather and ozone aging resistance, but poor in yield elasticity and storage stability. It is not suitable for food industry.
- ◇ OF(orange) is suitable for handling workpiece with very rough surface. It has good yield elasticity, wear resistance, tear resistance, high cut resistance and good malleability, but poor in oil resistance, heat resistance and aging resistance. It is not suitable for food industry.
- ◇ Various sizes suitable for workpiece of different sizes.



## Usage

- ◇ The foam rubber cup lip can compensate the gap on the rough surface, which can be used in the occasion that the general suction cup cannot suck the workpiece firmly. However, more attention needs to be paid while using due to its poor tear resistance. The foam rubber cup lip only has the sealing function and cannot handle the pulling condition. Hence, firstly be sure to press the flat rectangular foam rubber cup and the workpiece to the limit, and then open the vacuum to pick up the workpiece. When releasing the workpiece, firstly place it in the specified position, then stop vacuum in order to protect the foam rubber cup lip from tearing. Please consult with AIRBEST if anything unclear in actual use.

## Applications

- ◇ Buckle plate
- ◇ Marble
- ◇ Grid metal plate
- ◇ Tile
- ◇ Cement board

## How to order

SNP 50×135 NF – G2F

① ② ③ ④

① Series	② Dimension	③ Material & Hardness	④ Connection thread
SNP	50×135 60×135 75×107 68×290 140×290	NF – Neoprene foam rubber OF – Geranium foam rubber	G2F – G1/4 Female thread G3F – G3/8 Female thread G4F – G1/2 Female thread

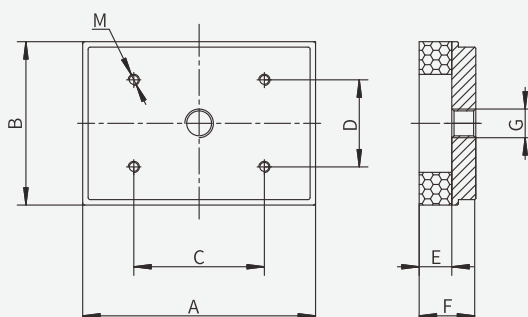
## Selection

Model/Connection thread	G2F	G3F	G4F
SNP50×135	●	–	–
SNP60×135	●	–	–
SNP75×107	●	–	–
SNP68×290	–	●	–
SNP140×290	–	–	●

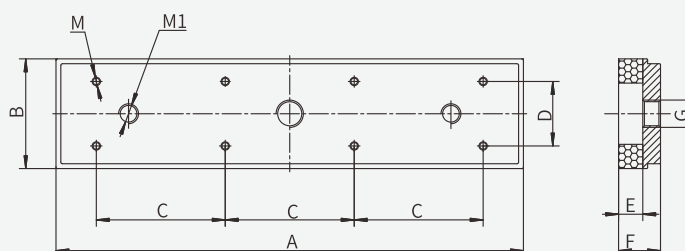
◇ Note: "●" – default, in stock. "–" – unavailable.

## Dimensions (mm)

SNP50×135  
SNP60×135  
SNP70×107



SNP68×290  
SNP140×290



Model/ Size	Pull-out force (N)	A	B	C	D	E	F	G	M	M1
<b>SNP50×135</b>	60	135	50	80	30	15	26	G1/4	4-M5	—
<b>SNP60×135</b>	80	135	60	80	40	15	26	G1/4	4-M5	—
<b>SNP75×107</b>	90	107	75	60	40	15	26	G1/4	4-M5	—
<b>SNP68×290</b>	250	290	68	80	40	15	26	G3/8	8-M5	2-M12
<b>SNP140×290</b>	720	290	140	80	100	15	26	G1/2	8-M5	2-M12

◇ Note: Testing vacuum level -60kPa. Workpiece with smooth and clean surface. The data of pull-out force as above are figured out without considering safety factor. The data may be different according to different workpiece surfaces.

## Spare parts

Item	Model		Applicable suction cup
	NF	OF	
Foam rubber	SNP50×135NF	SNP50×135OF	SNP50×135
	SNP60×135NF	SNP60×135OF	SNP60×135
	SNP75×107NF	SNP75×107OF	SNP75×107
	SNP68×290NF	SNP68×290OF	SNP68×290
	SNP140×290NF	SNP140×290OF	SNP140×290

◇ Note: Please refer to page 22 for mounting parts selection.

SB  
SBA  
SBB  
SBF  
SBOF  
SFT  
SFA  
STP  
SBL  
SBLP  
SBS  
SF  
SU  
SUF  
SFG  
SFU  
STC  
SFF  
SFM  
SDM  
SHT  
SOFA  
SOB  
SOF  
SOG  
SFP  
SBP  
SXP  
SGP  
SDL  
SH  
SHB  
SZ  
SAN  
SAO  
SPA  
SPC  
SPF  
SPJ  
SPU  
SNP  
SOP