

Features

- ◇ Small size, simple structure and light weight.
- ◇ It can be equipped with built-in or external vacuum pump.
- ◇ Suitable for handling light and small object.

Application

- ◇ 3C
- ◇ Sheet metal
- ◇ Sorting
- ◇ Package

How to order

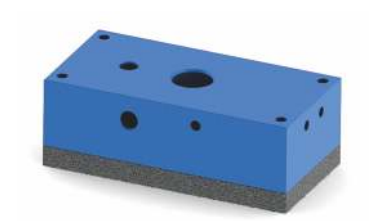
TXN 15×76 - B5 WS - C

① ② ③ ④ ⑤

① Series	② Dimension	③ Adsorption surface type	④ Material of suction cup	⑤ Vacuum type
TXN	22×38 22×76	A - Conventional sponge type AT - Mark free sponge type CA - Conductive sponge type	—	Nil - Without vacuum pump
	60×120	A - Conventional sponge type	—	C - With built-in vacuum pump
	15×76	B5N - Φ5Double-row suction cup B7N - Φ7Double-row suction cup	Nil - Default, NBR. WS - White silicone	C - With built-in vacuum pump
	15×90	B3 - Φ3Single-row suction cup B5 - Φ5Single-row suction cup B7 - Φ7Single-row suction cup B3N - Φ3Double-row suction cup B5N - Φ5Double-row suction cup B7N - Φ7Double-row suction cup		
	27×90	B3D - Φ3 Four-row suction cup B5D - Φ5 Four-row suction cup B7D - Φ7 Four-row suction cup		

Features

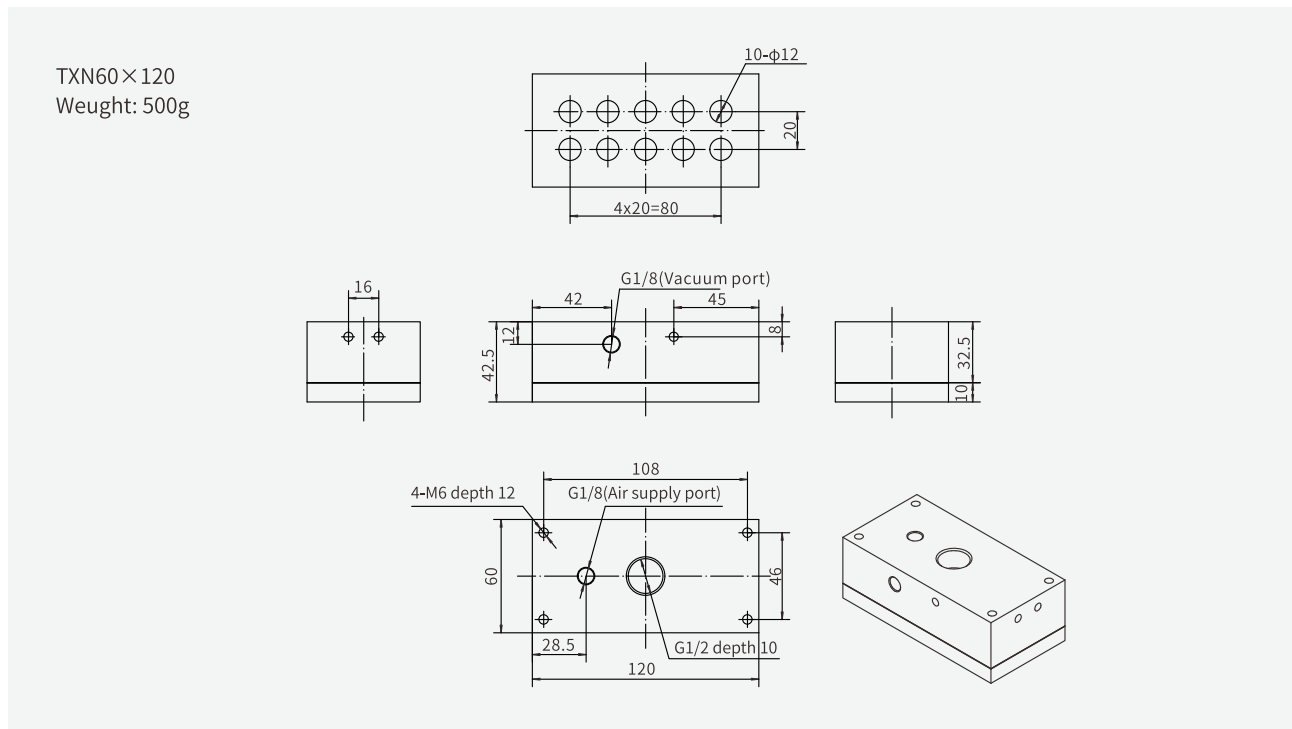
- ◇ The product is applied to the handling and sorting of light and small workpieces. It can be used to grasp the workpieces with porous structure and effectively grasp the workpieces with partial adsorption leakage.



Technical parameters

Air supply pressure(bar)	Max. vacuum level(- kPa)	Max.vacuum flow(NL/min)	Air consumption (NL/min)	Air supply port
6.0	85	150	75	G1/8

Dimensions (mm)



Spare parts

Sponge	Model	Dimension(mm)
60×120 Sponge	TXN120-A	60×120×10