

## Features

- ◇ Small size, simple structure and light weight.
- ◇ It can be equipped with built-in or external vacuum pump.
- ◇ Suitable for handling light and small object.

## Application

- ◇ 3C
- ◇ Sheet metal
- ◇ Sorting
- ◇ Package

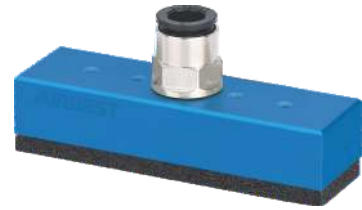
## How to order

TXN 15×76 - B5 WS - C  
 ①                      ②                      ③                      ④                      ⑤

① Series	② Dimension	③ Adsorption surface type	④ Material of suction cup	⑤ Vacuum type
TXN	22×38 22×76	A - Conventional sponge type AT - Mark free sponge type CA - Conductive sponge type	—	Nil - Without vacuum pump
	60×120	A - Conventional sponge type	—	C - With built-in vacuum pump
	15×76	B5N - Φ5Double-row suction cup B7N - Φ7Double-row suction cup	Nil - Default, NBR. WS - White silicone	C - With built-in vacuum pump
	15×90	B3 - Φ3Single-row suction cup B5 - Φ5Single-row suction cup B7 - Φ7Single-row suction cup B3N - Φ3Double-row suction cup B5N - Φ5Double-row suction cup B7N - Φ7Double-row suction cup		
	27×90	B3D - Φ3 Four-row suction cup B5D - Φ5 Four-row suction cup B7D - Φ7 Four-row suction cup		

## Features

◇ The product is applied to the handling and sorting of light and small workpieces. It can be used to grasp the workpieces with porous structure and effectively grasp the workpieces with partial adsorption leakage.



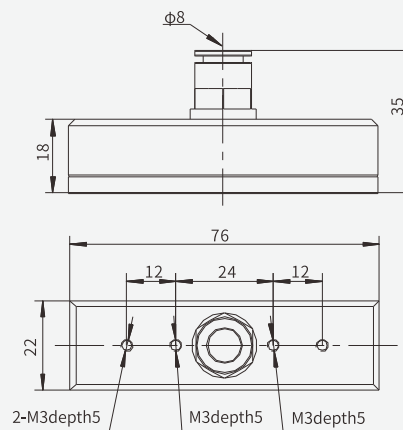
## Technical parameters

Hose diameter (mm)	Max.theoretical suction force (N)(-60 kPa)	Recommended Minimum Flow of Vacuum pump(NL/min)	Vacuum port	Optional function
φ8	34	≥60	G1/4	Mark free/ Conductive

Note: 1.Testing vacuum level -60kPa,the data of suction force as above are figured out in the condition that the vacuum gripper is full covered by a rigid airtight workpiece,and without including safety factor,working temperature 0-60°C.  
2.The mark less in the auxiliary function of the above table indicates that special materials are attached to the sponge surface to reduce the mark on the contact surface.  
3.Conductivity in the auxiliary functions shown in the table above indicates the use of special conductive sponge materials.

## Dimensions(mm)

TXN22×76  
Weught: 68g



## Spare parts

Sponge	Model	Dimension(mm)	Application
22×76 Conventional sponge	TXN76-A	22×76×5	Conventional application
22×76 Mark free sponge	TXN76-AT	22×76×5	Mark free application
22×76 Conductive sponge	TXN76-CA	22×76×5	Conductive application