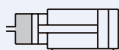




MHBU

Unclamping Booster



Features

- Provide hydraulic power to direct drive or motor spindle.
- Modular design.
- With oil volume sensing device.

Specification

Model	MHBU
Bore size	100
Intensified pressure ratio	12.7
Discharging volume (c.c.)	70 / 110 (*1)
Operating pressure range (MPa)	0.4~0.6 (*2)
Ambient temperature (°C)	0~+60
Installation	Vertical installation (*3)
Operating oil	ISO VG32 or equivalent
Voltage	DC24V / AC110V / AC220V
Sensor switch	RCI (2m) (Please refer to page 8-13)
Weight (kg)	8.5

*1. The chosen output capacity must be at least 20% to 30% greater than the requirement.

*2. Suggest to set the operating pressure for 0.6 ± 0.1 MPa.

*3. The product must be higher than the working hydraulic cylinder.

*4. The product is the pressure driver and has to be used with hydraulic unclamping cylinder.

Order example

MHBU — 100 — 12M — 70 — 4E1 — DC24

MODEL

BORE SIZE

WITH
SENSOR

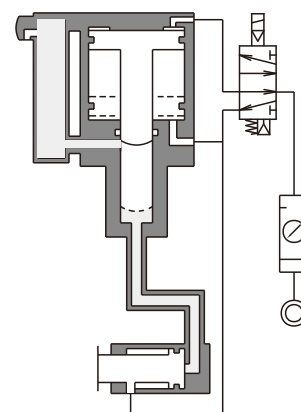
INTENSIFIED
PRESSURE RATIO
12: 12.7

DISCHARGING
VOLUME
70: 70 c.c.
110: 110 c.c.

SOLENOID VALVE
4E1: MVSC-300-4E1

VOLTAGE
AC110V(50/60)Hz
AC220V(50/60)Hz
DC24V

Circuit



Theoretical output force

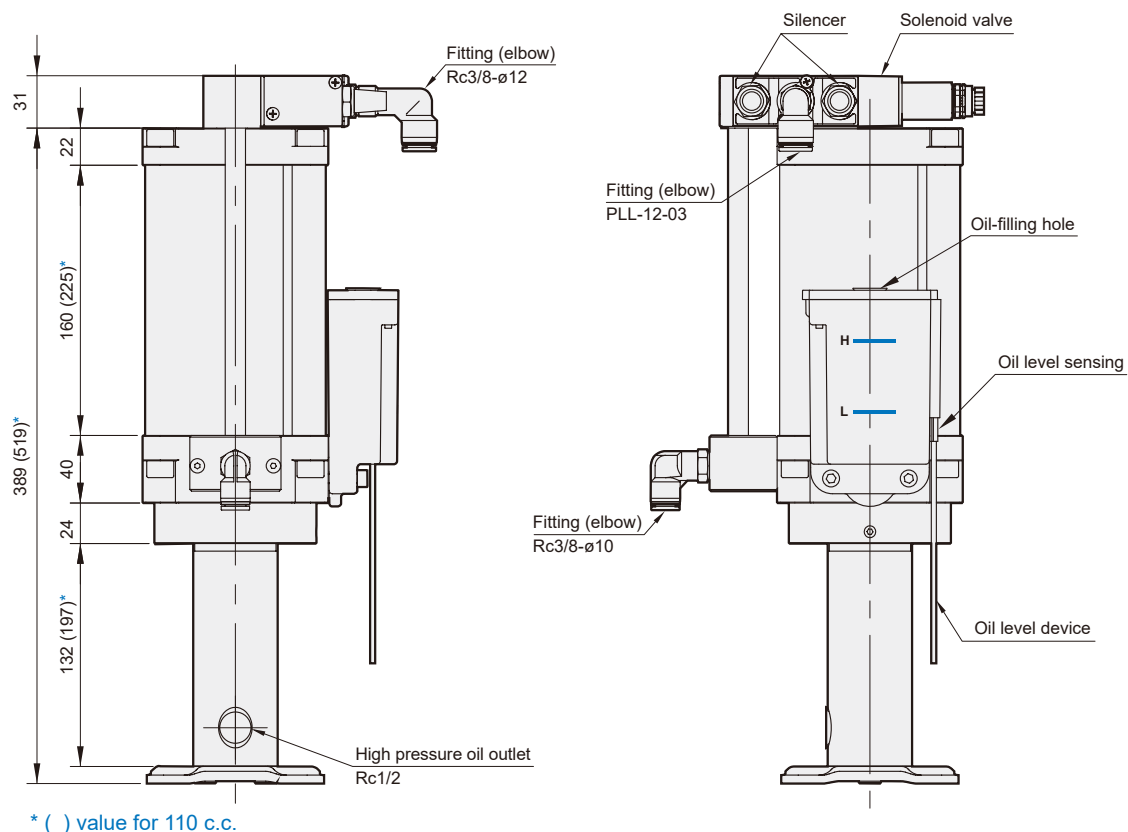
Operating pressure (MPa)	0.4	0.5	0.6
Oil pressure output force (kgf/cm ²)	50.8	63.5	76.2

MHBU Dimensions

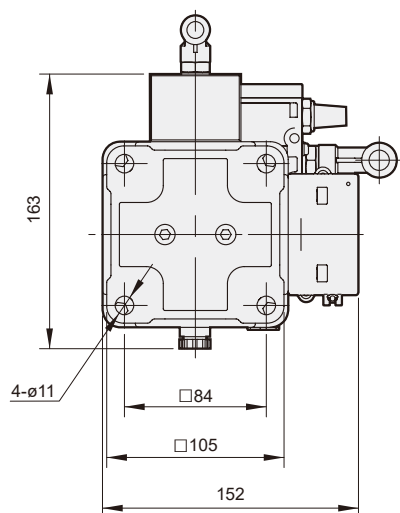
UNCLAMPING BOOSTER



MHBU-100



* () value for 110 c.c.



Oil cup capacity

