

MVSC1 series [Product feature]



SOLENOID VALVE

- Manual override design, easier to test.
- Quick plug design, easier to wiring by socket.
- **Terminal Material**
Material of terminal housing is PA6 which has good chemical resistance and weather resistance.
- **DISK seal and U-packing (HNBR)**
High wear resistance, wide working temperature - 35 ~ +150°C, excellent sealability, lifetime 50 million cycles.
- Quick response time (25~30ms).
- [Low power output PLC] can drive solenoid valve directly.
- **Applying SurTec 650**
Nonoxidizable for 336hrs under neutral salt spray test.

Electric Connection



- (L) DIN terminal with LED indicator



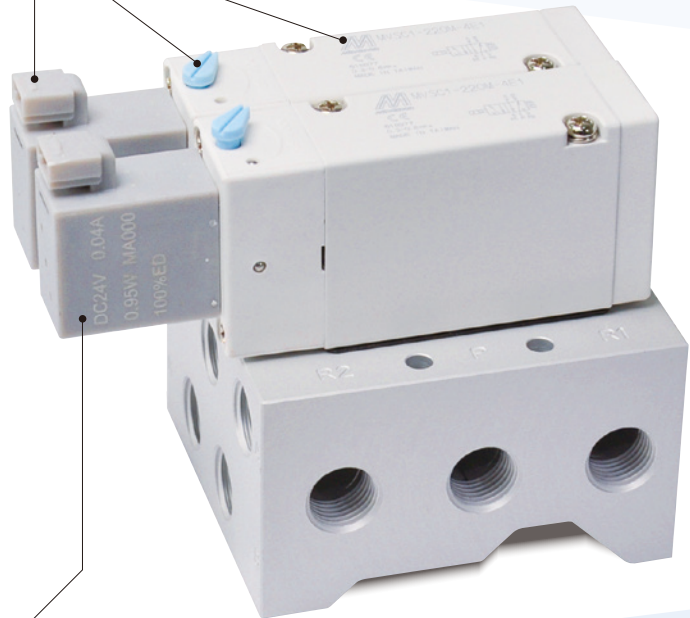
- (D) DIN terminal



- (W) Lead wire



- (H) Horizontal plug with LED indicator



Coil Features

Bridge rectifier design

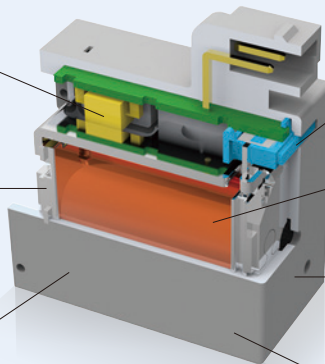
Converting AC voltage to DC, it can eliminate operating noise.

Low power consumption

DC power 0.95W, it can save over 70% power consumption compared with other brand (3W).

Low current consumption

It can extend lifetime of driver (PLC, Relay...).



Indicator (LED)

Indicating coil operating condition.

Cooper wire insulation class

H class/180°C.

Coil insulation class

F class/155°C.

Low ambient temperature as operating.